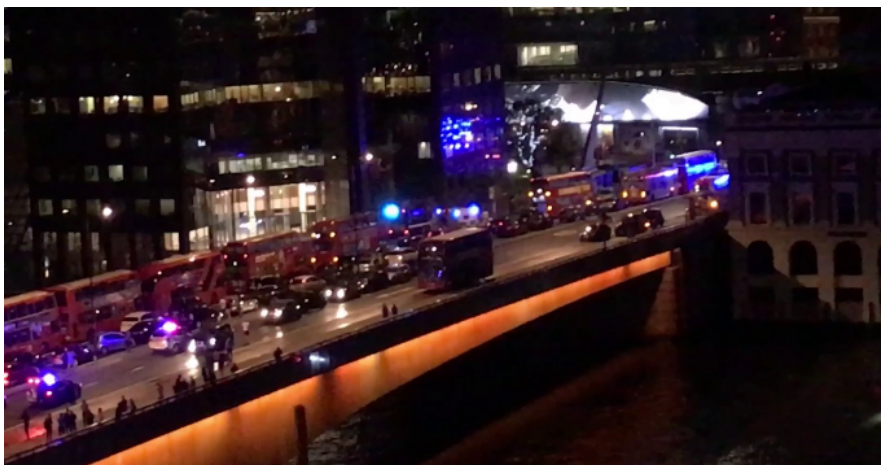
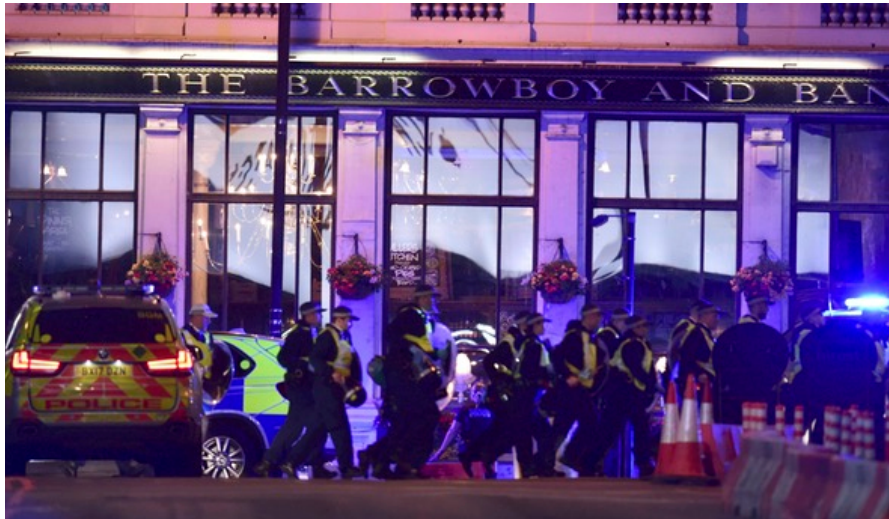


Practical Lifesaving Solutions Review – London Bridge and Borough Market

On Saturday, June 3, 2017 at approximately 10:00 pm (GMT) seven people were killed and dozens wounded in a terrorist attack on London Bridge and in Borough Market. Within minutes of the attack, the Metropolitan Police received reports that a vehicle had struck pedestrians on London Bridge. A white van with Hertz hire markings eventually came to a halt outside a pub on the south side of the bridge. Three attackers then jumped out and continued on foot to nearby Borough Market, a popular bar and restaurant area. The men, armed with knives, attacked and stabbed a number of people. Armed officers confronted the men, who were wearing what appeared to be explosive vests. It was subsequently determined the vests were fake. All three were shot dead in Borough Market within eight minutes of the first call to emergency services. Seven people have been confirmed dead and at least 48 wounded were taken for treatment at hospitals across London.

Within the past year, vehicular attacks have occurred in Nice, France (July 14, 2016), the Berlin Christmas Market (December 19, 2016) and Times Square (May 18, 2017). The attack in London combined a vehicular assault with the added efforts to further maim and kill people using knives. Again, the intention is to inflict as much damage on a civilian population as possible. The attackers are taking advantage of popular tourist attractions where there are large crowds. This has the added effect of harming a diverse group of people from a number of nations.





Summary

Previous reviews have discussed the importance of situational awareness. People, especially tourists, are distracted as they walk about cities. They are looking at maps, enjoying the sites and generally feel safe, especially with the increased law enforcement presence in major cities and around popular attractions. Their ability to hear or sense an approaching assailant, gun shots, screams, sounds of a vehicular impact, etc., is diminished.

Bridges in cities such as London, Paris, Rome, New York, etc., are amongst the most popular sites to visit. However, they are natural choke points, that is, they funnel people into a narrow area and either reduce or eliminate escape. Pedestrians are at great risk. Those that were able to identify the threat in London and able to react had virtually nowhere to go. The vehicular assault is no longer an ***“emerging threat.”*** Tragically, it is now a well-established tactic.